

艾瑞

# ARIS

SUITES

THE PENINSULA

*City Pulse, Coastal Calm*

# WHERE THE SKY MEETS THE SEA, & INVESTMENT MEETS OPPORTUNITY

在海天相融之境，开启投资新机遇

Step into a destination where the ocean inspires,  
Where golden horizons ignite possibilities.  
A place where tourism thrives, and returns take flight,  
Your premier investment, bathed in ocean light.

At **Aris Suites**, paradise isn't just an escape —  
it's your gateway to high-yield returns.

来到这片灵感涌动的海洋胜地，金色地平线在眼前铺展，孕育无限可能。  
旅游产业蓬勃发展，投资回报潜力非凡，臻品资产，海光为证。

艾瑞不仅是心灵的栖息地 — 更是通往丰厚的投资回报。

---

Breathtaking  
Panoramic  
Seafront View  
— 一览无余壮阔美丽的海景

---

Integrated Development  
with Shopping malls,  
F&B and Retail Outlets  
购物中心、餐饮及零售店一体化综合开发项目

---

The New Tunku Abdul  
Rahman Park Jetty  
within walking distance  
步行即达东姑阿都拉曼公园新码头

---

Over 500m of  
Seafront Perimeter  
Boardwalk  
500米海滨栈道尽享悠闲时光







## DELIGHTFUL INDULGENCE 悦享之境

A vibrant lifestyle hub where retail, dining, and daily essentials come together. From curated boutiques and cafés to everyday conveniences, it's a space to shop, relax, and recharge in style.

一个集零售、餐饮与生活于一体的活力中心；汇聚精选精品店与便捷服务，为您打造购物、休闲与焕新活力的时尚空间。

# RETAIL, RELAX & RECHARGE

畅享购物、放松与充电的时光

## FACILITIES DECK 设施平台

Awaken your senses with curated experiences, active lifestyle, evolve freely in inspiring spaces, and embrace a deeper connection with your vibrant, limitless self.

用精心策划的体验唤醒感官，在积极生活节奏中自由进化，置身启发灵感的空间，成就那个充满活力、无限可能的自己。

- ◆ 511 Commercial Suites 商务套房
- ◆ 30 Levels 层楼
- ◆ 53 Commercial Retail Units 商业零售单位
- ◆ 165 Carparks 停车位 (5 Levels 五层)
- ◆ 4+1 Lifts 电梯
- ◆ Grand Lobby & Lounge 高级大厅
- ◆ Infinity Pool 无边际泳池
- ◆ Gym 健身房
- ◆ Sunset Pavilion 日落观景台





24 Hours  
CCTV  
Security System  
24小时监控与安保系统



Energy Saving  
System for Cost  
Efficient Operations  
节能系统, 高效运营省成本



Centralised  
Concierge for Seamless  
Check-in Experience  
集中式礼宾服务, 丝滑入住体验



Ready for  
Business after  
Vacant Possession  
房屋交付后即可开展业务



Housekeeping &  
Laundry Service\*  
客房清洁与洗衣服务\*



Digital Lockset for  
Check-in Convenience  
智能门锁, 便捷入住

## SUNSET PROMENADE 霞映步道

Unwind by the waterfront as golden sunsets paint the horizon in breathtaking hues. Whether enjoying a quiet stroll, dining al fresco, or simply taking in the view, every evening here is a moment of calm, beauty, and timeless escape.

水岸之畔, 夕阳染金天际。无论是悠闲散步、露天用餐, 还是沉浸于风景之中, 每个傍晚都是一场静谧与美的邂逅。



**OUR AWARD-WINNING  
DESIGN PARTNERS**  
我们屡获殊荣的设计合作伙伴

# GDP

Architecture Design by  
GDP Architects

[www.gdparchitects.com](http://www.gdparchitects.com)



"We Create Spaces That People Love"

Interior Design by  
RDM Design

[www.rdm-design.com](http://www.rdm-design.com)

L | 49

Landscape Design by  
L49 Architects (Thailand)

<https://l49.co.th/>

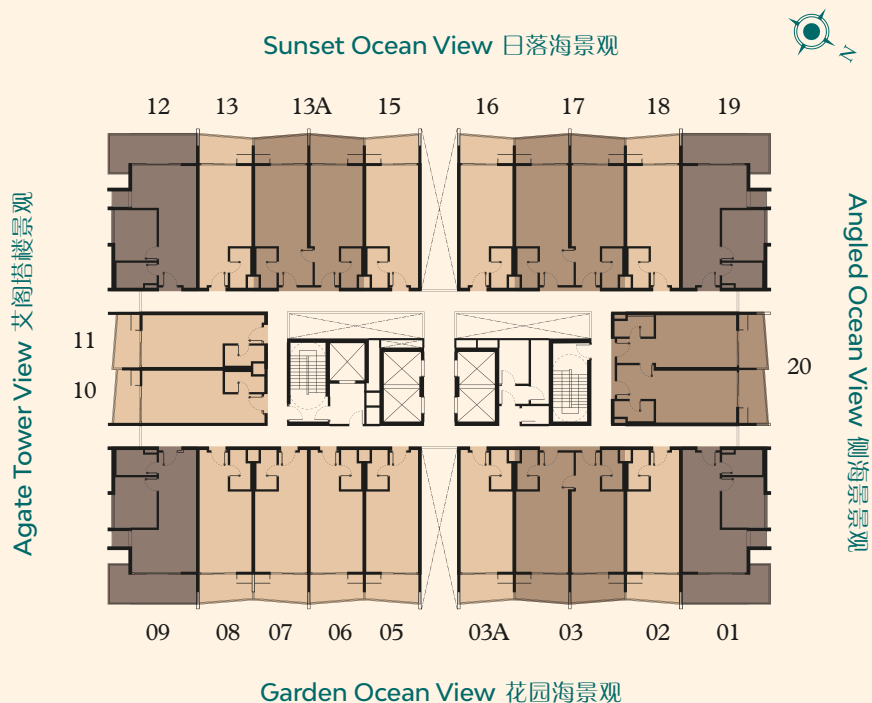
\*T&Cs apply  
\*须符合条规

# VERSATILE FLOOR PLANS

灵活多样的户型

TYPE 户型

- A
- B
- DK / DKC



# FACILITIES PLAN

设施平面图

LEGEND 图例



- ① Sunset Pavilion 日落观景台
- ② The Horizon 天际线观景台
- ③ Pool Lounge 泳池休闲区
- ④ Infinity Pool 无边际泳池
- ⑤ Kid's Pool 儿童泳池
- ⑥ Jacuzzi 水疗浴池
- ⑦ Sunset Pavilion 日落观景台
- ⑧ Gym 健身中心
- ⑨ Lift Lobby 电梯厅
- ⑩ Golden Hour Lounge 黄金时光酒廊
- ⑪ Male Washroom 男卫生间
- ⑫ Female Washroom 女卫生间
- ⑬ Management Office 物业管理处
- ⑭ In-house Operator Office 住宿运营办公室
- ⑮ Laundry 洗衣房

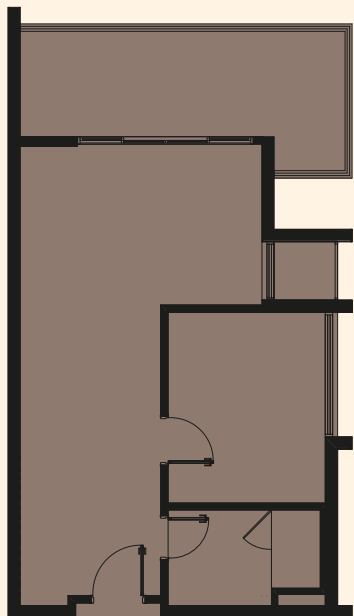
1 ROOM SUITE  
一居室套房

TYPE 户型

A

826 sq.ft. 平方英尺

🏠 1 Bedroom 卧室 🚿 1 Bathroom 浴室



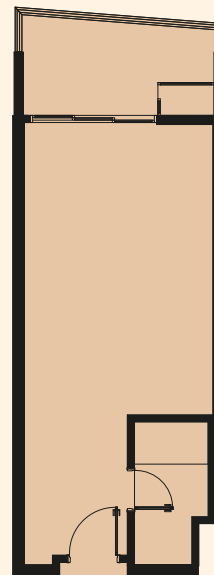
STUDIO  
单间套房

TYPE 户型

B

531 sq.ft. 平方英尺

🏠 1 Bedroom 卧室 🚿 1 Bathroom 浴室



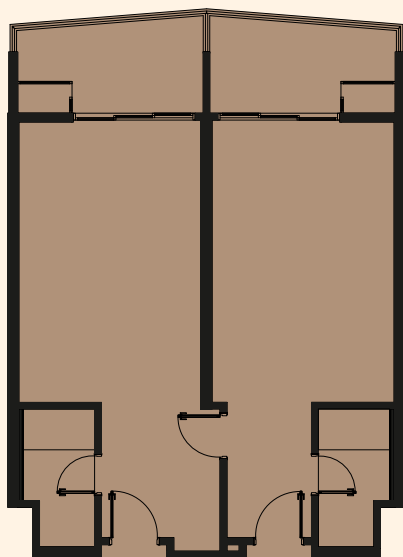
DUAL KEY  
双钥匙套房

TYPE 户型

DK

1,065 sq.ft. 平方英尺

🏠 2 Bedrooms 卧室 🚿 2 Bathrooms 浴室



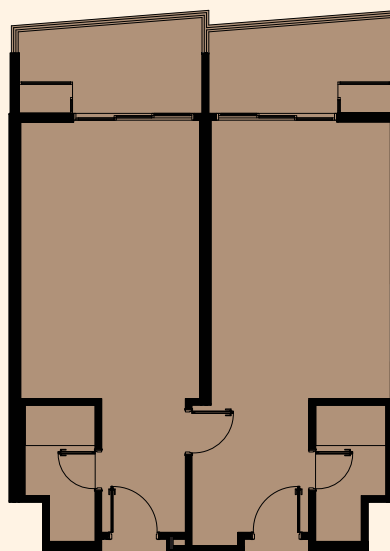
DUAL KEY  
(CORNER)  
双钥匙套房(边角单位)

TYPE 户型

DKC

1,059 sq.ft. 平方英尺

🏠 2 Bedrooms 卧室 🚿 2 Bathrooms 浴室



# A PRIME ADDRESS

黄金地段，尊贵之选

At the heart of Sabah's capital, The Peninsula Kota Kinabalu rises as a new landmark along the city's iconic waterfront, where breathtaking views of the South China Sea meet vibrant city energy and coastal tranquillity.

位于沙巴首都的核心地带，亚庇半岛屹立于城市海滨，成为令人瞩目的新地标。这里坐拥南中国海的壮丽美景，完美融合都市活力与海岸宁静。



FOR MORE INFORMATION 欲知详情，请拨打或浏览：



Scan QR code to learn more  
欢迎扫描  
二维码浏览网站



+6011-7000 6688

www.peninsulakk.com



The Peninsula Kota Kinabalu



thepeninsulakk

**TRILLIUM**  
DEVELOPMENT SDN BHD  
2016024517 (1195456 - V)

Disclaimer: All images and illustrations in this publication are artist's impressions provided for visual reference only. Interior visuals are conceptual and should not be taken as accurate representations of the actual unit. Nothing contained herein shall form part of, or be deemed as part of, any formal Sale and Purchase Agreement, nor constitute a warranty or representation by Trillium Development Sdn Bhd, unless expressly stated in the said agreement. Prospective purchasers are advised to carefully review the Sale and Purchase Agreement and its enclosures prior to signing. Trillium Development Sdn Bhd shall not be held responsible for any errors, inaccuracies, losses, or damages arising from reliance on this publication or any of its visual representations.