

ARIS
SUITES

THE PENINSULA

City Pulse, Coastal Calm

WHERE THE SKY MEETS THE SEA, & INVESTMENT MEETS OPPORTUNITY

Step into a destination where the ocean inspires,
Where golden horizons ignite possibilities.
A place where tourism thrives, and returns take flight,
Your premier investment, bathed in ocean light.

At **Aris Suites**, paradise isn't just an escape —
it's your gateway to high-yield returns.

Breathtaking
Panoramic
Seafront View

Integrated Development
with Shopping malls,
F&B and Retail Outlets

The New Tunku Abdul
Rahman Park Jetty
within walking distance

Over 500m of
Seafront Perimeter
Boardwalk







DELIGHTFUL INDULGENCE

A vibrant lifestyle hub where retail, dining, and daily essentials come together. From curated boutiques and cafés to everyday conveniences, it's a space to shop, relax, and recharge in style.

RETAIL, RELAX & RECHARGE

FACILITIES DECK

Awaken your senses with curated experiences, active lifestyle, evolve freely in inspiring spaces, and embrace a deeper connection with your vibrant, limitless self.

- ◆ 511 Commercial Suites
- ◆ 30 Levels
- ◆ 53 Commercial Retail Units
- ◆ 165 Carparks (5 Levels)
- ◆ 4+1 Lifts
- ◆ Grand Lobby & Lounge
- ◆ Infinity Pool
- ◆ Gym
- ◆ Sunset Pavilion





24 Hours
CCTV
Security System



Energy Saving
System for Cost
Efficient Operations



Centralised
Concierge for Seamless
Check-in Experience



Ready for
Business after
Vacant Possession



Housekeeping &
Laundry Service*



Digital Lockset for
Check-in Convenience

SUNSET PROMENADE

Unwind by the waterfront as golden sunsets paint the horizon in breathtaking hues. Whether enjoying a quiet stroll, dining al fresco, or simply taking in the view, every evening here is a moment of calm, beauty, and timeless escape.



OUR AWARD-WINNING DESIGN PARTNERS

GDP

Architecture Design by
GDP Architects

www.gdparchitects.com



"We Create Spaces That People Love"

Interior Design by
RDM Design

www.rdm-design.com

L | 49

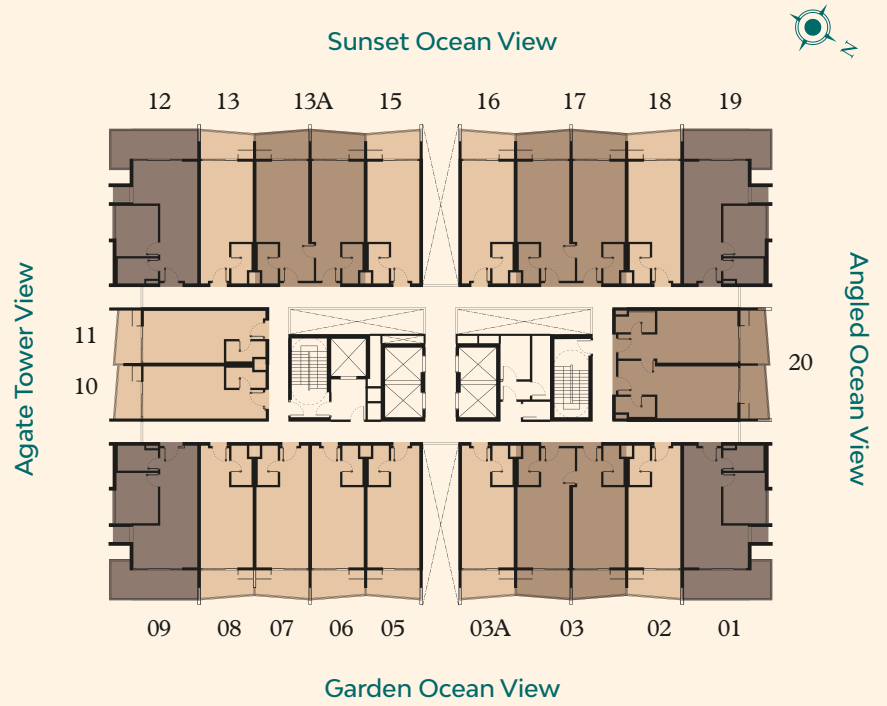
Landscape Design by
L49 Architects (Thailand)

<https://l49.co.th/>

VERSATILE FLOOR PLANS

LEGEND

- TYPE A
- TYPE B
- TYPE DK / DKC



FACILITIES PLAN



LEGEND

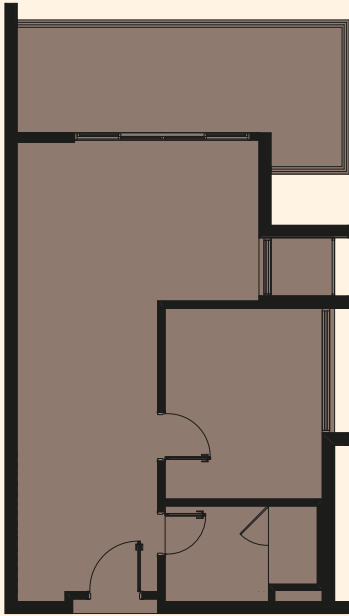
- 1 Sunset Pavilion
- 2 The Horizon
- 3 Pool Lounge
- 4 Infinity Pool
- 5 Kid's Pool
- 6 Jacuzzi
- 7 Sunset Pavilion
- 8 Gym
- 9 Lift Lobby
- 10 Golden Hour Lounge
- 11 Male Washroom
- 12 Female Washroom
- 13 Management Office
- 14 Airbnb Office
- 15 Laundry

1 ROOM
SUITE

TYPE
A

826 sq.ft.

1 Bedroom 1 Bathroom

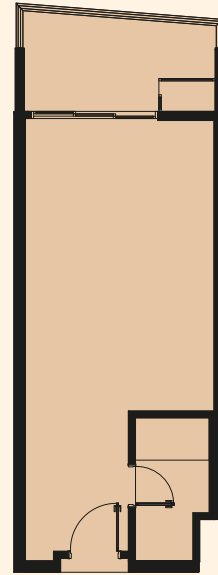


STUDIO

TYPE
B

531 sq.ft.

1 Bedroom 1 Bathroom

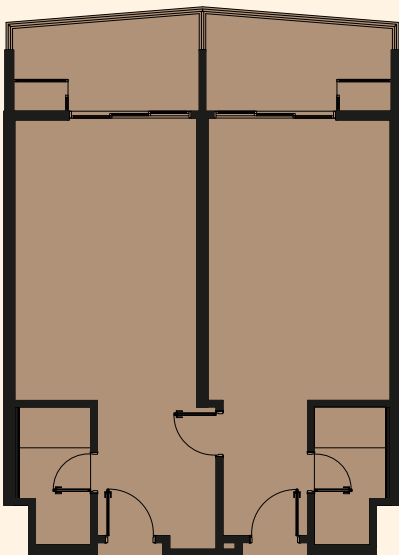


DUAL KEY

TYPE
DK

1,065 sq.ft.

2 Bedrooms 2 Bathrooms

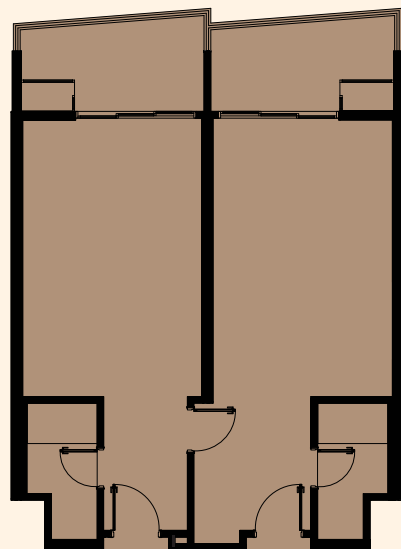


DUAL KEY
(CORNER)

TYPE
DKC

1,059 sq.ft.

2 Bedrooms 2 Bathrooms



A PRIME ADDRESS

At the heart of Sabah's capital, The Peninsula Kota Kinabalu rises as a new landmark along the city's iconic waterfront, where breathtaking views of the South China Sea meet vibrant city energy and coastal tranquillity.



FOR MORE INFORMATION



Scan QR code to learn more



+6011-7000 6688



www.peninsulakk.com



The Peninsula Kota Kinabalu



thepeninsulakk

TRILLIUM
DEVELOPMENT SDN BHD
2016024517 (1195456 - V)

Disclaimer: All images and illustrations in this publication are artist's impressions provided for visual reference only. Interior visuals are conceptual and should not be taken as accurate representations of the actual unit. Nothing contained herein shall form part of, or be deemed as part of, any formal Sale and Purchase Agreement, nor constitute a warranty or representation by Trillium Development Sdn Bhd, unless expressly stated in the said agreement. Prospective purchasers are advised to carefully review the Sale and Purchase Agreement and its enclosures prior to signing. Trillium Development Sdn Bhd shall not be held responsible for any errors, inaccuracies, losses, or damages arising from reliance on this publication or any of its visual representations.